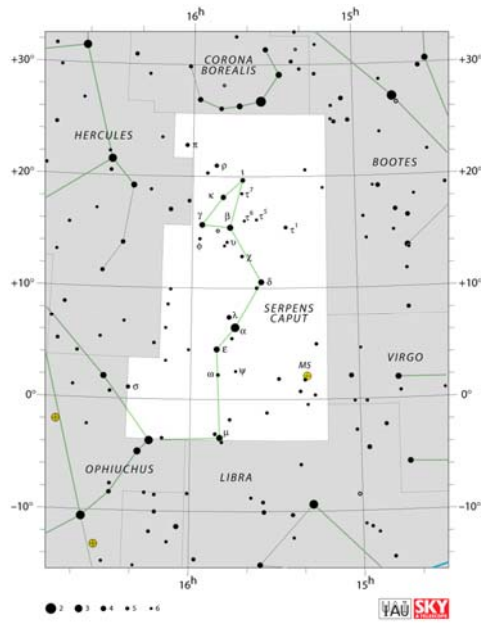
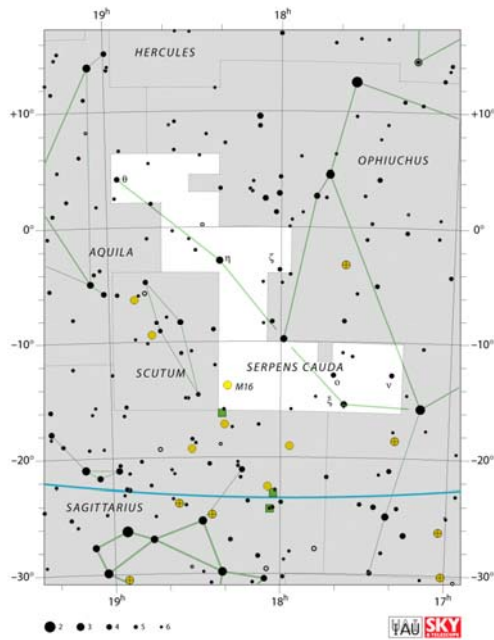


Constellation of the Month - Serpens.

Your challenge is to observe, and record what you see ready for including in the Sky Notes presentation next month.

The Constellation of the Month will be selected from one that is readily visible most of the night during the month.



Rugby & District Astronomical Society

www.rugbyastro.org.uk

Honorary President:	Roger Jackson	Chair:	Dr Johanna Jarvis
Treasurer :	Sarah Meek	Membership Secretary	Barrie Chessell
Webmaster	David Riley	Secretary:	Lesley Dyke
Sky Notes	Chris Longthorn		

Email rugby-Astro@hotmail.co.uk

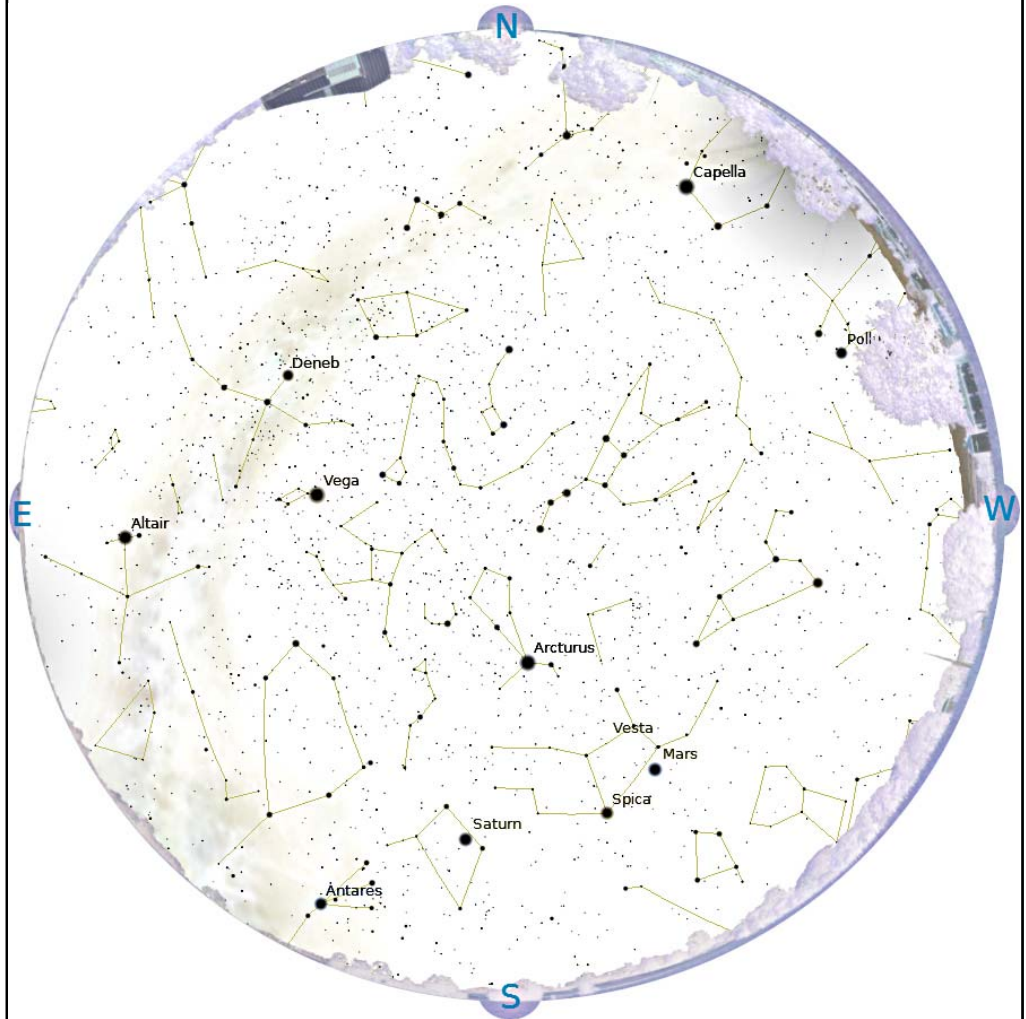
Phone 07739-716383

© R&DAS 2014

Rugby & District Astronomical Society Sky Notes

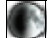



by Chris Longthorn

June 2014, no 61



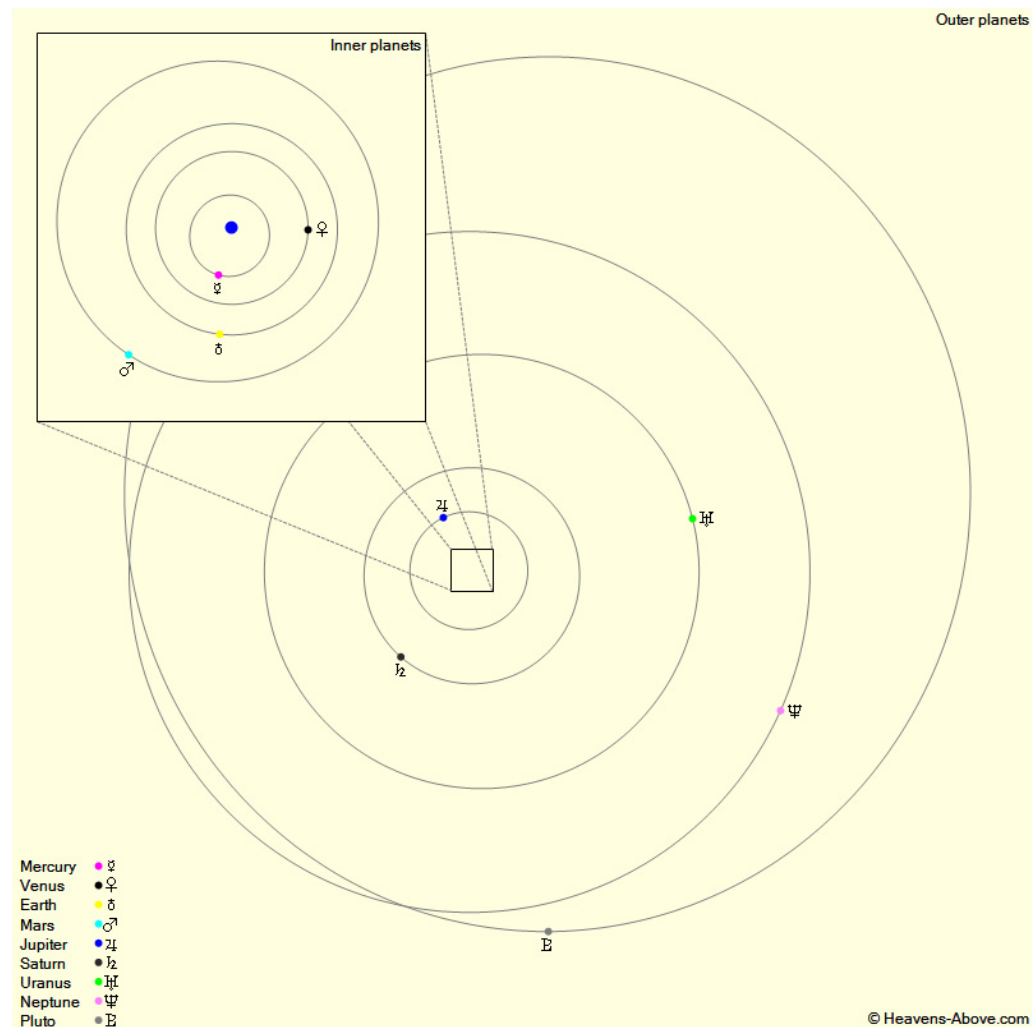
The night sky at 23:00 U.T.C., June 15th

Sky Events Calendar 2014 June

Sunday	Monday	Tuesday	Wednesday	Thursday	Friday	Saturday
1 Venus 37° W	2	3 Moon Apogee 05:25	4	5  5 First Quarter 21:39	6 Iridium 72, 16:49:06 -8.1 82° 276°	7 ISS, -3.1 04:49:20 75° NE
8 Moon-Mars 01:44 Moon-Spica 23:05 Iridium 49, 18:32:03 -8.3 67° 126°	9 Moon A Node 06:36	10 Moon-Saturn 20:11	11	12  13 Full Moon 05:11 Moon S Dec 07:03	14 Iridium 46, 18:03:57 -8.4 76° 131°	15
15 Moon Perigee 04:34 Jup-Pol. 12:54 R&DAS 19:30, Meeting Church Lawford	16	17	18	19  19 Last Quarter 19:39 Mercury Infer 23:42	20	21 Summer Sol 11:52 Moon D Node 21:30
22	23 Venus-M45 14:00	24 Moon-Venus 13:54	25 Moon-Aldeb 07:22	26 Moon N Dec 09:34 Iridium 55, 18:54:21 -8.1 61° 121°	27  27 New Moon 09:08	28
29	30 Moon Apogee 20:09					

All times in UTC, add one hour for BST
 Sky Events Calendar by Fred Espenak and Sumit Dutta (NASA's GSFC)
 ISS, Iridium Data and Solar System Map courtesy of Heavens-Above (www.heavens-above.com)

The Planets, mid month.



Mercury is in Orion with a magnitude of +4.5, a phase of 2%, and a diameter of 12". It rises at 05:34, transits at 13:34, and sets at 21:34. It is currently too close to the Sun to be observed.

Venus is in Aries with a magnitude of -3.9, a phase of 81%, and a diameter of 13". It rises at 03:13, transits at 10:45, and sets at 18:17. It is visible in the morning sky.

Mars is in Virgo with a magnitude of -0.2, a phase of 89%, and a diameter of 11". It sets at 01:56, rises again at 14:42, and transits at 20:17. It is visible in the evening sky.

Jupiter is in Gemini with a magnitude of -1.8 and a diameter of 32". It rises at 07:03, transits at 15:11, and sets at 23:19. It is visible low in the west after sunset.

Saturn is in Libra with a magnitude of +0.3 and a diameter of 18". It sets at 03:20, rises again at 17:49, and transits at 22:32. It is well placed for observation throughout the night.

Uranus is in Pisces with a magnitude of +5.9 and a diameter of 3". It rises at 01:59, transits at 08:31, and sets at 15:03. It is visible in the morning sky.

Neptune is in Aquarius with a magnitude of +7.9 and a diameter of 2". It rises at 00:56, transits at 06:10, and sets at 11:23. It is visible in the morning sky.