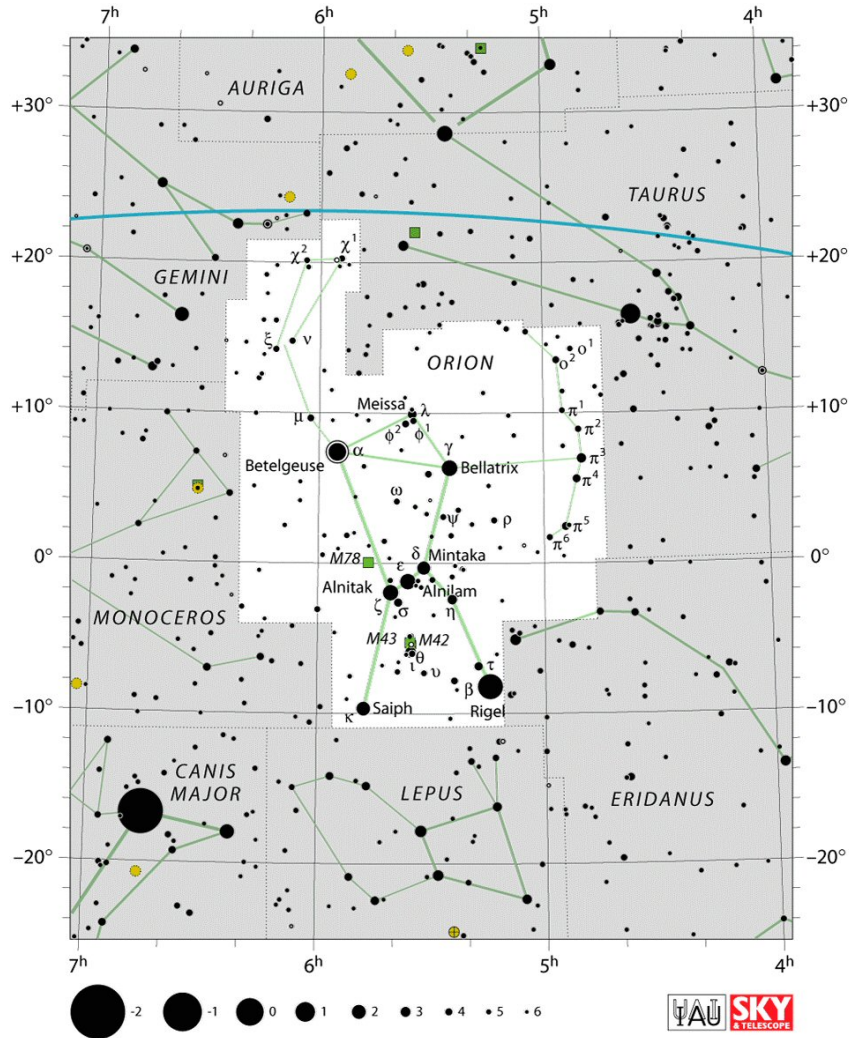


# Constellation of the Month - Orion

Your challenge is to observe, and record what you see ready for including in the Sky Notes presentation next month.

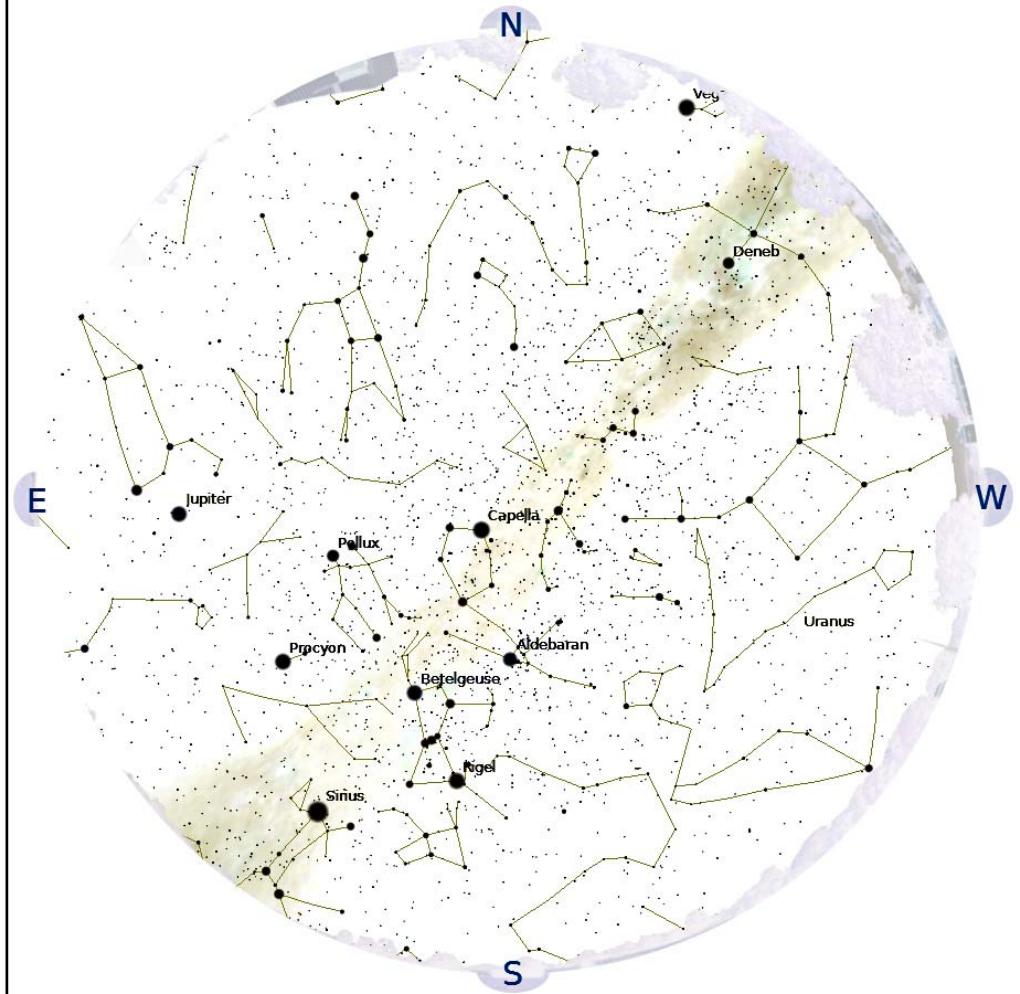
The Constellation of the Month will be selected from one that is readily visible most of the night during the month.



# Rugby & District Astronomical Society Sky Notes

by Chris Longthorn

December 2014, no 67



**Rugby & District Astronomical Society**

[www.rugbyastro.org.uk](http://www.rugbyastro.org.uk)

Honorary President:	Roger Jackson	Chair:	Dr Johanna Jarvis
Treasurer :	Sarah Meek	Membership Secretary	Barrie Chessell
Webmaster	David Riley	Secretary:	Lesley Dyke
Sky Notes	Chris Longthorn		





Email [rugby-Astro@hotmail.co.uk](mailto:rugby-Astro@hotmail.co.uk)

Phone 07739-716383

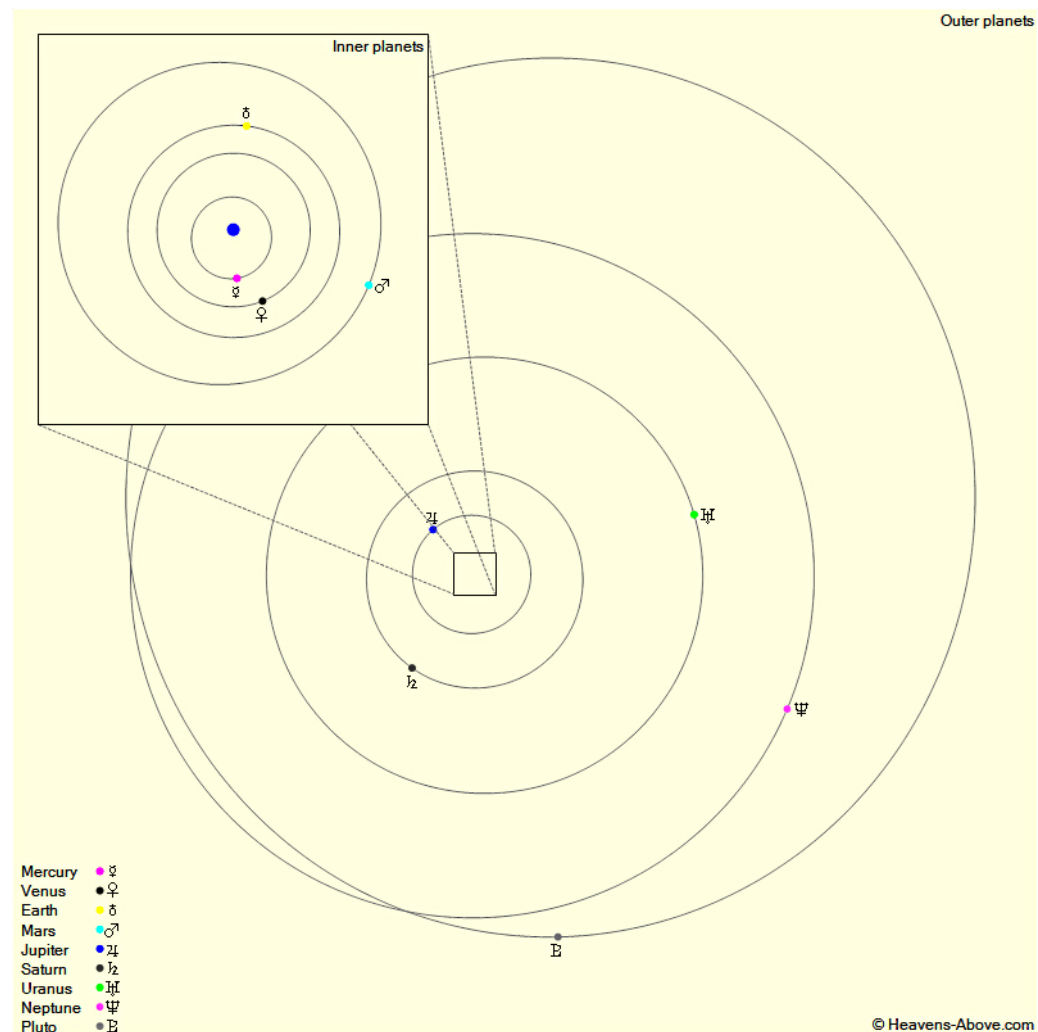
© R&DAS 2014

The night sky at 23:00 U.T.C., Dec 15th

# Sky Events Calendar 2014 December

Sunday	Monday	Tuesday	Wednesday	Thursday	Friday	Saturday
30	<b>1</b> Venus 9.3° E	<b>2</b> Moon D Node 08:32 Iridium 59 16:24 Mag -8.5 Alt 71° Az 77° (ENE)	3	4 Iridium 37 05:44 Mag -6.2 Alt 18° Az 163° (SSE)	5	 <b>6</b> Moon-Aldeb 04:35 Full Moon 12:27
<b>7</b> Moon N Dec 09:06 R&DAS Christmas Meal, Dun Cow, 20:00 Iridium 96 05:34 Mag -6.3 Alt 19° Az 169° (SSE)	<b>8</b> Mercury Super 09:37	<b>9</b> Iridium 86 06:16 Mag -6.6 Alt 23° Az 51° (NE)	<b>10</b> Iridium 4 05:24 Mag -5.9 Alt 20° Az 176° (S)  Iridium 8 05:25 Mag -6.6 Alt 20° Az 176° (S)  Iridium 35 17:40 Mag -8.4 Alt 55° Az 43° (NE)	<b>11</b>	<b>12</b> Moon Apogee 23:02 R&DAS Observing, Barby 4:30 p.m.	<b>13</b>
 <b>14</b> Geminids 11:39 Last Quarter 12:51	15	<b>16</b> Moon A Node 13:27 ISS, -3.2 17:42:44 68° SSE Iridium 6 05:06 Mag -6.0 Alt 21° Az 188° (S)	17	18 ISS, -3.3 17:38:36 80° S	<b>19</b> Moon-Saturn 20:55 ISS, -3.1 16:48:13 74° S	20 ISS, -3.3 17:34:22 77° S
<b>21</b> Moon S Dec 18:25 Winter Sol 23:03	 <b>22</b> New Moon 01:36 Ursids 20:00	<b>23</b> ISS, -3.1 16:39:32 73° S	<b>24</b> Moon Perigee 16:43 Iridium 90 07:26 Mag -7.3 Alt 36° Az 60° (ENE)	25	26	<b>27</b> R&DAS Observing, Barby 4:30 p.m.  Iridium 52 18:09 Mag -7.9 Alt 49° Az 37° (NE)
 <b>28</b> First Quarter 18:31	<b>29</b> Moon D Node 09:27	<b>30</b> Iridium 10 05:37 Mag -6.5 Alt 20° Az 174° (S)	<b>31</b> Iridium 40 06:15 Mag -6.3 Alt 20° Az 48° (NE)	1	2	3

# The Planets, mid month.



**Mercury** is in Sagittarius with a magnitude of -1.0, a phase of 99%, and a diameter of 5". It rises at 08:41, transits at 12:17, and sets at 15:53. It is currently too close to the Sun to be observed.

**Venus** is in Sagittarius with a magnitude of -3.9, a phase of 98%, and a diameter of 10". It rises at 09:13, transits at 12:55, and sets at 16:38. It is visible low in the west after sunset.

**Mars** is in Capricornus with a magnitude of +1.0, a phase of 93%, and a diameter of 5". It rises at 10:57, transits at 15:12, and sets at 19:28. It is visible in the evening sky.

**Jupiter** is in Leo with a magnitude of -2.3 and a diameter of 41". It transits at 04:11, sets at 11:33, and rises again at 20:44. It is visible in the morning sky.

**Saturn** is in Libra with a magnitude of +0.5 and a diameter of 15". It rises at 05:55, transits at 10:18, and sets at 14:42. It is visible low in the east before sunrise.

**Uranus** is in Pisces with a magnitude of +5.8 and a diameter of 4". It sets at 01:44, rises again at 12:50, and transits at 19:15. It is visible in the evening sky.

**Neptune** is in Aquarius with a magnitude of +7.9 and a diameter of 2". It rises at 11:48, transits at 16:57, and sets at 22:05. It is visible in the evening sky.